

Azimut 62 S

Year: 2009 - Hull number: 71



GENERAL DESCRIPTION

Year:	2009	Layout:	1 master cabin, 2 guest cabins, 3 heads
Current Price:	EUR 850,000	Accommodation:	2 owner cab., 2 vip cab., 2 guest cabin
VAT status:	Not paid	Crew:	1 cab. (1 crew) + 1 head
Laying:	Lebanon	Hull color:	Bordeaux
		Interiors:	Wengé oak & Brown leathers

MACHINERY: 2 x CATERPILLAR C18 ACERT 1.015 mHP (240 hrs)

Shaft line

1 x Kohler 20 kW generator – Shore Power 220/24V

ELECTRONICS & NAVIGATION:

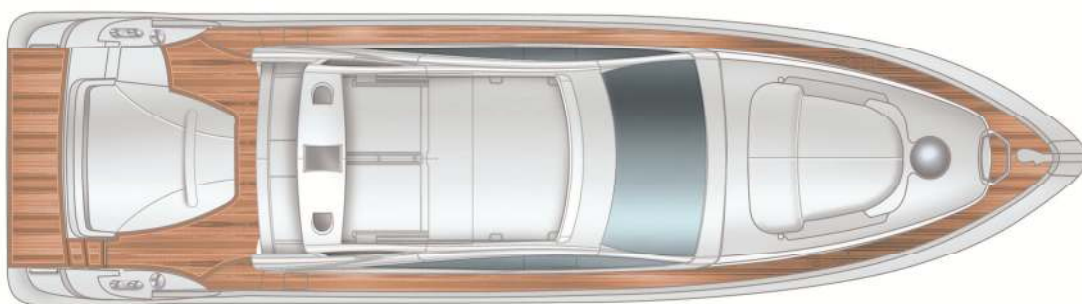
Raymarine pkg. (incl. 1x E120 at main helm) – ST6002 auto pilot - RAY E240 VHF (main helm) - Radar antenna 24NM – Maneuvering Joystick in helm – Complete A/V system with 32” TV (elevator) in saloon, Bose 3.2.1 system in salon and KVH TrackVision

COMPREHENSIVELY EQUIPPED:

A/C system 83.000 BTU - Bow thrusters – Stern thruster – Electrohydraulic bathing platform with teak - Electric mooring winches in cockpit – Barbecue & Fridge in cockpit - Teak laid cockpit - Telescopic gangway –Galley equipped with glass-ceramic hobs, Refrigerator 230 lt w/freezer, Microwave oven & grill, Dish washer, Washer & Dryer - crockery with Azimut logo.

OTHER INFO: Sunbathing cushions and Cockpit cushions – Underwater lights – Electric pilot seat in helm – Dimmered lights in salon and cockpit

LAYOUT



Flying Bridge



Main Deck



Lower Deck

ELECTRONICS & NAVIGATION



EXTERIOR



EXTERIOR con't



EXTERIOR con't



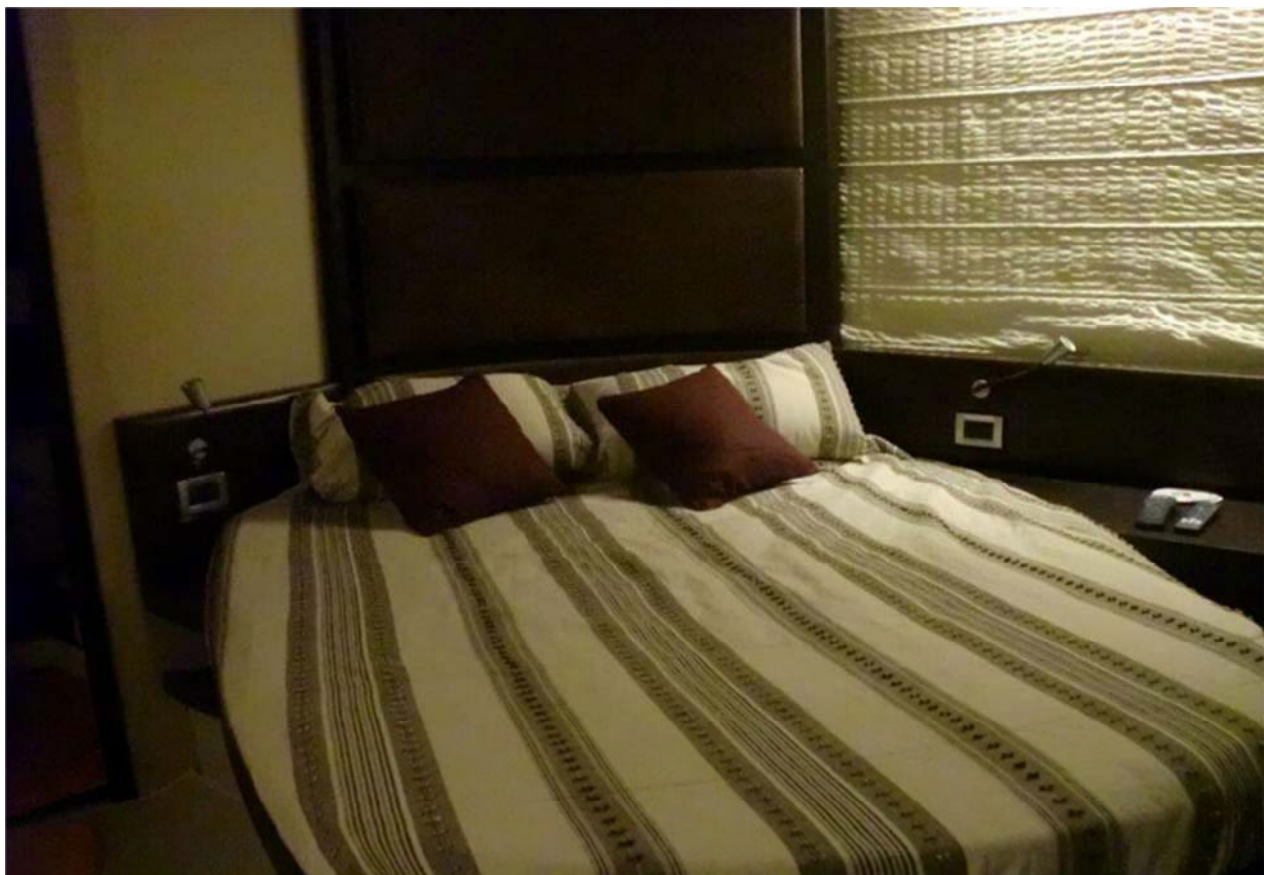
MAIN DECK



GALLEY



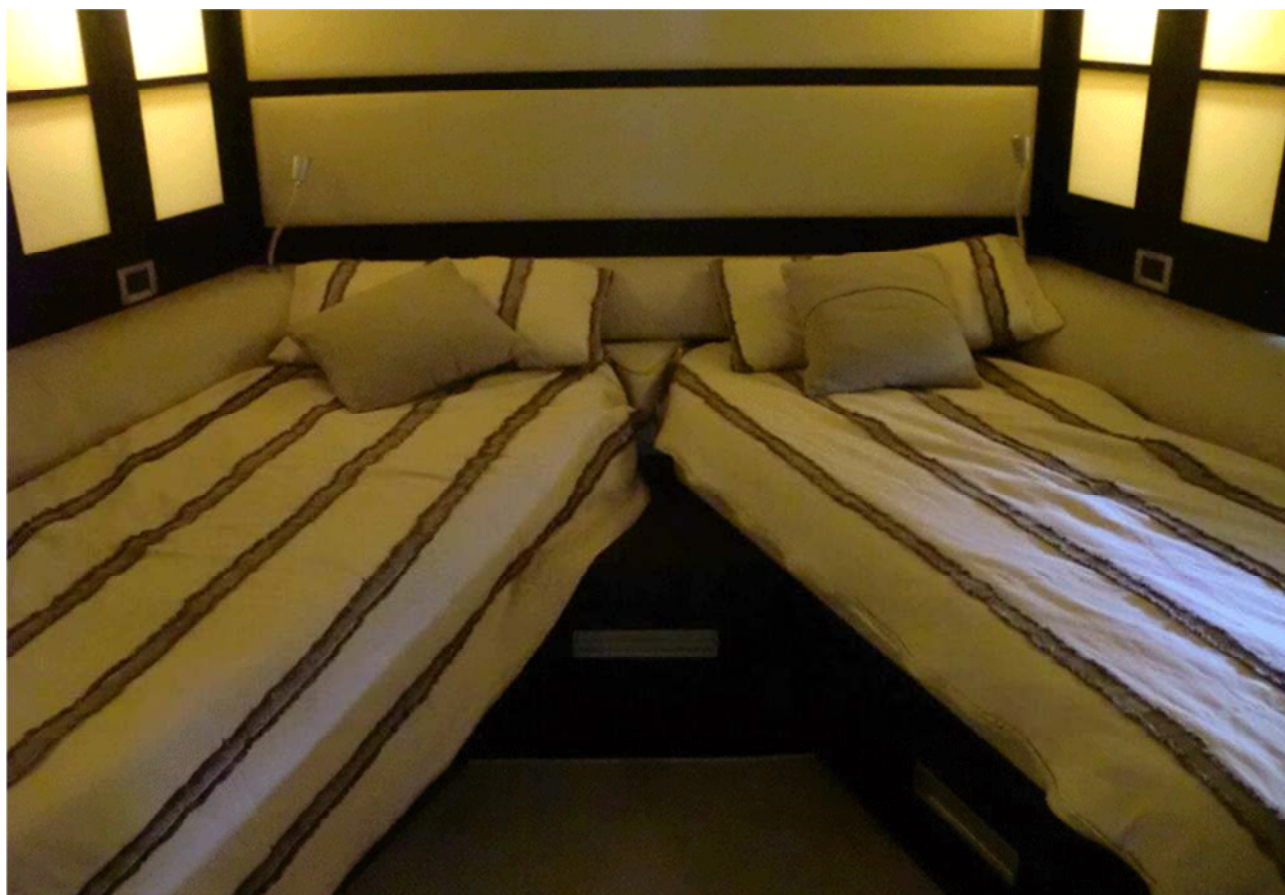
LOWER DECK (Owner cabin)



LOWER DECK (guest cabin)



LOWER DECK (VIP cabin)



ADDITIONAL INFORMATION

Length overall (incl. pulpit)	19,06 m
Hull length (incl. platform)	18,41 m
Beam at main section	4,90 m
Draft (incl. props at full load)	1,53 m
Displacement (at full load)	30,72 t
Maximum speed (at half load)	34 kn
Cruising speed (at half load)	29 kn
Fuel capacity	2.700 l
Water capacity	835 l
Building material	GRP
Keel	planning
Exterior styling & concept	Stefano Righini
Interior Design	Carlo Galeazzi
Builder	Azimut Yachts

UNI ISO 8666

The performance described applies to a vessel with standard configuration (standard equipment installed) and a clean hull, propellers, and rudder. It is also noted that the performance described was recorded under favourable sea and wind conditions (Beaufort scale index 1, Douglas scale index 1); different and worse sea conditions could significantly impact performance.

CE Mark.

Given the continual evolution of technology, Azimut | Benetti S.p.A reserves the right to modify the technical specifications on its vessels at any time and without prior notice.

Disclaimer:

Any and all information contained in this brochure, including without limitation all technical data, performance, illustrations and drawings, are just a rough guide and they are not contractual and refer to standard models of motor yachts built by the shipyard. Therefore the only indications binding on the seller are contained solely in the sale agreement and in the relevant specific manual. This brochure is based on information available at the date of release. Notwithstanding all efforts to insure accuracy, the information contained in this email may not cover all details, technical-commercial changes subsequent to the date of issue, nor accurately foresee or report all possible scenarios. Displays, photos, schemes, designs or examples contained in this brochure are solely and exclusively reproduced to highlight the information contained. Due to the different characteristics of each yacht, the shipyard declines any and all liability for any use thereof on the basis of the information contained in this brochure.